

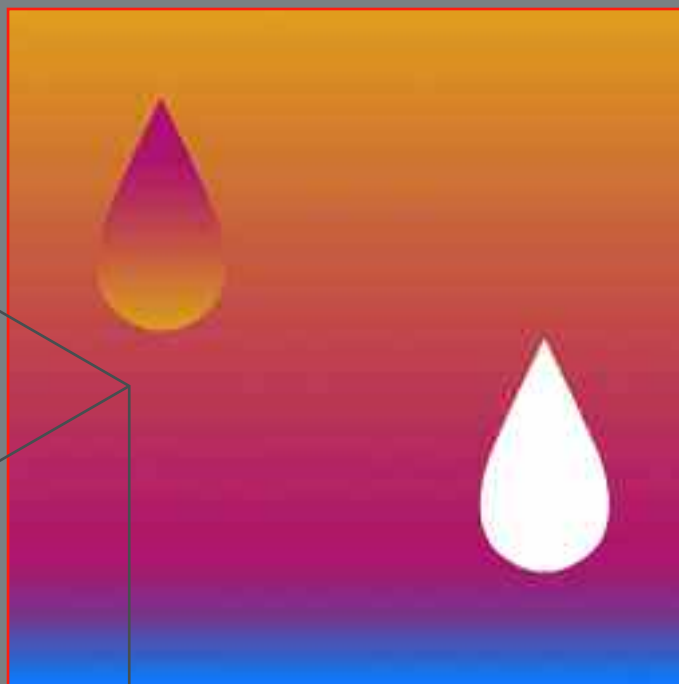
# VITODENS 100-W

High Efficiency Gas Condensing Boilers

Combi: 26kW, 30kW, 35kW

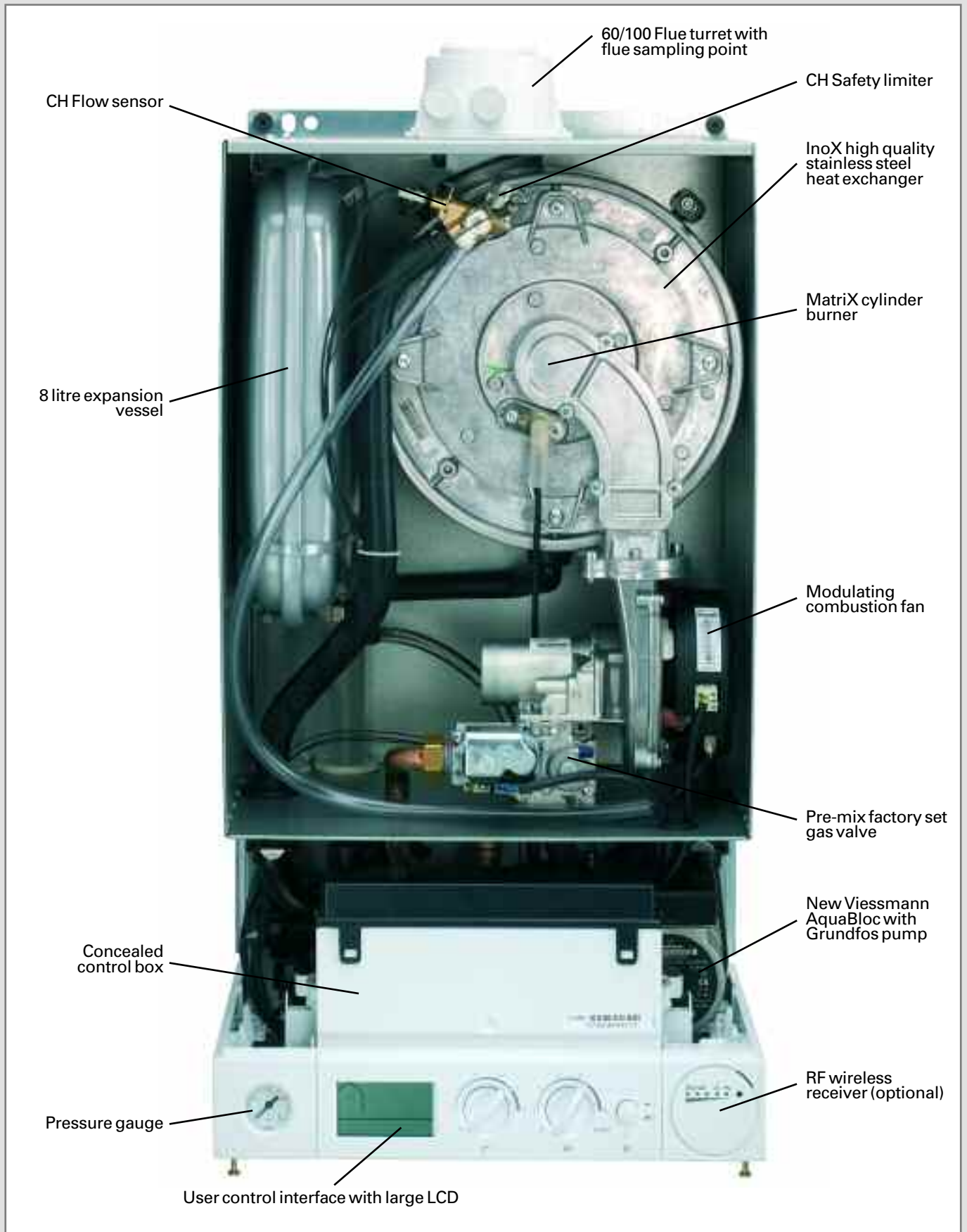
System: 26kW, 30kW, 35kW

**VIESSMANN**



**NEW FOR  
2008**

# VITODENS 100-W



**5 YEAR WARRANTY ON ALL VITODENS 100-W BOILERS FITTED BY VISSMANN TRAINED INSTALLERS**  
**10 YEAR WARRANTY ON HEAT EXCHANGER**

# VITODENS 100-W

The ALL NEW Vitodens 100-W high efficiency gas condensing boilers are loaded with NEW features for easy installation, high efficiency and impressive fuel savings

Combi: 26kW, 30kW, 35kW

System: 26kW, 30kW, 35kW



## New Outputs

This new generation of high performance boilers is manufactured by Viessmann in Germany. Vitodens 100-W Combi and System models are now available with outputs of up to 35kW.

## Great for Gas Bills

The all new Vitodens 100-W high efficiency gas condensing boilers are designed to work with weather compensation controls – for additional gas savings of up to 15%.

## Up to 5 Year Warranty

All Vitodens wall hung boilers have a standard 3 year warranty on parts and labour, which is increased to 5 years for all boilers installed by Viessmann trained installers. Completely free, with no strings attached, this guarantee is unrivalled in the industry.

## Benefits at a glance

- Weather compensation controls for additional fuel savings of up to 15%
- New Grundfos AquaBloc for easy servicing and quiet operation
- Operates with Natural Gas or LPG
- New plug-in controls for wireless operation
- Pre-heat function for added hot water convenience
- Viessmann's own stainless steel heat exchanger, guaranteed for 10 years
- New Viessmann modulating pre-mix MatriX cylinder burner for extra low emissions
- Frost protection
- Wide range of flues and accessories, including new horizontal telescopic flue
- 24 hour anti-seize pump control

### Technical Summary – Combi

Models	Dimensions (mm)	Weight (kg)*	CH output range kW (cond. mode)	SEDBUK %	Flue emissions Nox/CO mg/kWh	DHW Performance l/min @ 35° rise	Gas Council No.
26kW	725 x 400 x 340	34	9 - 26	90.0**	<50/40	10.6	47-819-18
30kW	725 x 400 x 360	39	11 - 26	90.3**	<50/40	12.3	47-819-19
35kW	725 x 400 x 360	39	11 - 26	90.3**	<50/40	14.3	47-819-20

### Technical Summary – System

Models	Dimensions (mm)	Weight (kg)*	CH output range kW (cond. mode)	SEDBUK %	Flue emissions Nox/CO mg/kWh	DHW Performance l/min @ 35° rise	Gas Council No.
26kW	725 x 400 x 340	33	9 - 26	90.1**	<50/40	N/A	41-819-12
30kW	725 x 400 x 360	38	11 - 30	90.3**	<50/40	N/A	41-819-13
35kW	725 x 400 x 360	38	11 - 35	90.1**	<50/40	N/A	41-819-14

\* without front panel

\*\* weather compensation controls add 2%

CE-0085 BT 0029



**5 YEAR WARRANTY ON ALL VITODENS 100-W BOILERS FITTED BY VISSMANN TRAINED INSTALLERS**  
**10 YEAR WARRANTY ON HEAT EXCHANGER**

# VITODENS 100-W

## Key features



The new Vitodens 100-W Combi and System boilers benefit from the latest Viessmann technology. In addition to Viessmann's unique stainless steel heat exchanger and MatriX cylinder burner, the boilers benefit from new improved components and a wide range of accessories and control options.

### **Weather Compensation – Great for gas bills**

With the increasing cost of fuel, boiler efficiency is becoming more and more important. The only way to improve the efficiency of a good quality condensing boiler is to add weather compensation controls.

The Vitodens 100-W Combi and System\* models are designed to work with optional weather compensation controls, to achieve additional fuel savings of up to 15% - meaning huge savings every year, for a small initial outlay (\*System models must be installed as a 4-pipe system).

For the boiler to operate in weather compensation mode, it needs to be connected to a small sensor on a north facing outside wall. When the temperature changes outside, the boiler responds by increasing or decreasing the radiator temperature, to compensate.

This proactive mechanism means that the boiler burns as much fuel as it needs – but no more – to achieve the desired room

temperature. This keeps the return temperature as low as possible, meaning that the boiler can condense more, thus saving more fuel.

People inside the building will experience a constant temperature and won't even notice that the temperature outside has changed – but they will notice a significant reduction of their gas bills!

Good news for planners – the weather compensation feature adds 2% to the boiler's SEDBUK efficiency when using SAP (Standard Assessment Procedure).

To understand more about the benefits of weather compensation and how it works, download our Weather Compensation brochure from [www.viessmann.co.uk](http://www.viessmann.co.uk)

### **InoX Radial Heat Exchanger**

Stainless steel is, without doubt, the best material for primary heat exchangers in condensing boilers. One of the unique design features of all Vitodens boilers is the InoX Radial heat exchanger made from high grade stainless steel.

The spiral wound tube, with rectangular profile is designed to ensure a laminar flow without a boundary layer for excellent heat transfer.

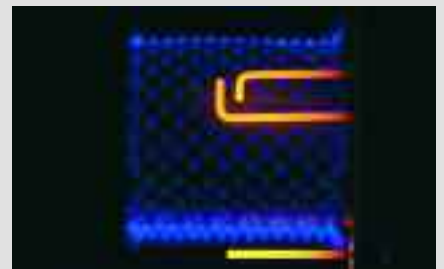
This self-cleaning component is so reliable that it is **GUARANTEED FOR 10 YEARS** against corrosion.

### **Modulating pre-mix MatriX cylinder burner**

Developed by Viessmann, the MatriX cylinder burner distributes heat cleanly and efficiently.

New Vitodens 100-W Combi and System models are fitted with the MatriX cylinder burner, to achieve a modulation range of 1:3 and extremely low emissions. Nitrogen Oxide production is kept to a minimum as the gas burns almost without flame, thanks to the complete pre-mixing of air and gas.

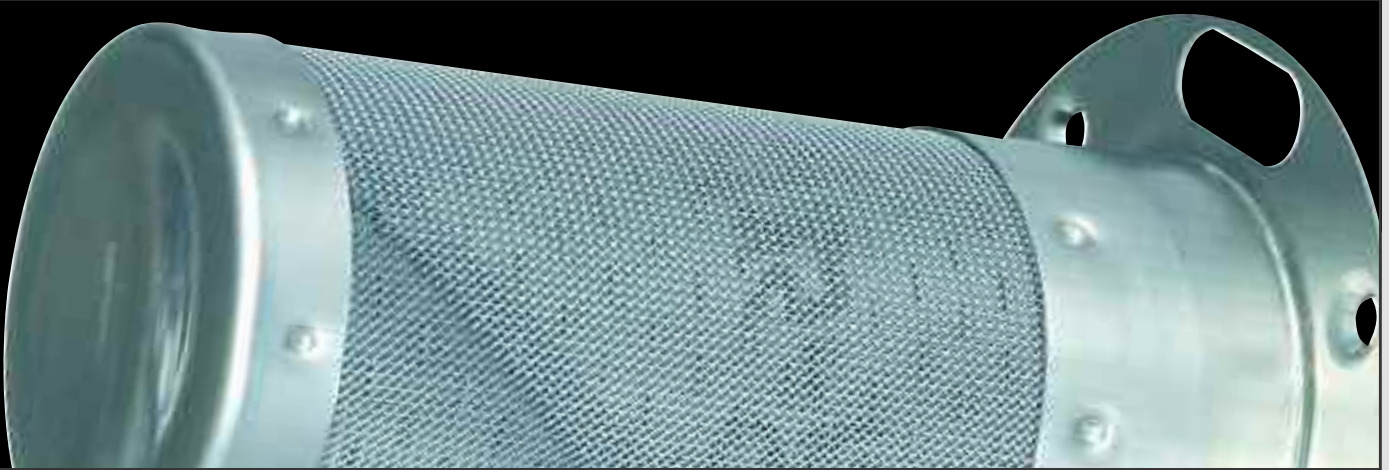
The secret of the MatriX cylinder burner is its stainless steel mesh. The metered air-gas mixture is evenly distributed and the fine mesh and large surface area ensure that the gas leaves the mesh at low velocity, resulting in hundreds of tiny flames rather than one big one.



**5 YEAR WARRANTY ON ALL VITODENS 100-W BOILERS FITTED BY VISSMANN TRAINED INSTALLERS**

**10 YEAR WARRANTY ON HEAT EXCHANGER**

## Key features



### New improved AquaBloc

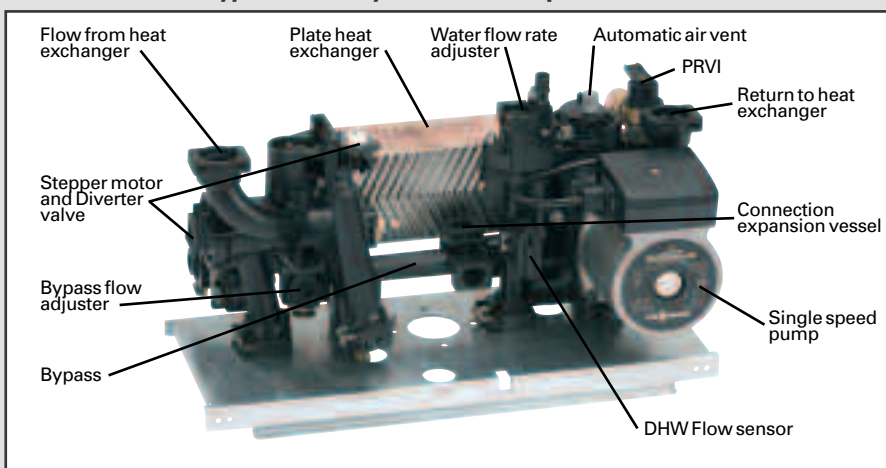
The AquaBloc combines all hydraulic components into one compact unit, to make all serviceable parts easily accessible from the front of the boiler.

Designed for reduced flow noises, with large cross section diameters and improved pipe design, the unit includes a compact heat exchanger, new flow sensor and adjustable bypass HV/HR. The Grundfos 1-speed pump can be electronically adjusted to a higher speed (Combi only).

### Hot water output

The Vitodens 100-W Combi boilers can achieve a flow rate of up to 14.3 litres/min at a temperature rise of 35°C (35kW).

### Vitodens 100-W (Typ WB1B) – Hydraulic unit AquaBloc



### Boiler control options

In addition to the weather compensation controls, the Vitodens 100-W models have a full range of time switches, and thermostats, including wireless thermostats which mean that there is no need for Part P connection. The controls complement the newly designed display panel – see page 6 for full details.

### Accessories

There are now more accessories than ever available for this range of boilers. These include pre-piping and pipe cover kits, plume kit, mounting brackets and a full range of flueing options for room sealed or open flued operation. For more details see page 7.

### Conversion to LPG

Combi and System models can run on either Natural Gas or LPG. For LPG operation a simple conversion kit is all that is needed, so even if mains gas isn't available, everyone can still benefit from the outstanding efficiency of the Vitodens 100-W.

### Compatibility with solar

As a manufacturer of the full range of renewable energy technologies all Viessmann boilers are 100% compatible with solar thermal panels.

The Vitodens 100-W now has the added advantage of boiler suppression, when using Viessmann solar panels and a dual coil cylinder. This means that the hot water system, will always take advantage of solar power, whenever solar energy is available and the boiler will only fire to 'top up' the heating process when absolutely necessary – resulting in significant fuel savings.

A new range of cylinders is available from Viessmann, including solar, dual coil cylinders.

# VITODENS 100-W

## Controls and Accessories



### Controls

The new Vitodens 100-W Combi and System models have improved controls with a large user friendly display. The optional control accessories include analogue and digital options, with new wireless controls, which means installations can be completed without the need for Part P and they are ideal for remote boiler installations e.g. in a garage or roof space.

Weather compensation controls are a real bonus, with householders able to save up to an additional 15% on annual gas bills.

In addition to the outdoor weather compensation sensor, optional controls for the Vitodens 100-W are as follows:

- Vitotrol 100 UTA RF, 1 channel 24 hour analogue programmer, with plug-in receiver for wireless operation.
- Vitotrol 100 UTD RF, 2 channel, 7 day digital programmer, with plug-in receiver for wireless operation.
- Analogue plug-in clock for operation with Vitotrol 100 Room Thermostat. (d)
- Digital plug-in clock for operation with Vitotrol 100 Room Thermostat. (d)

### Training

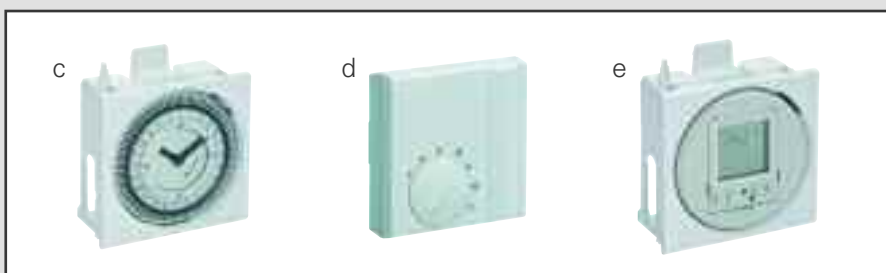
Free training courses are held every week at the dedicated training facility at Viessmann Headquarters in Telford Shropshire.

Training takes the form of both classroom discussions and practical training. Most courses take place over one or two days and certificates are issued on the successful completion of each course. CORGI registered installers, merchants, consultants and local government specifiers are welcome to attend.

### Product Warranties

Vitodens 100-W boilers come with a standard 3 year full parts and labour warranty. This is increased to 5 years for all boilers fitted by Viessmann trained installers.

The InoX Radial stainless steel primary heat exchanger that features in the Vitodens 100-W is guaranteed for 10 years against corrosion.



**5 YEAR WARRANTY ON ALL VITODENS 100-W BOILERS FITTED BY VISSMANN TRAINED INSTALLERS**

**10 YEAR WARRANTY ON HEAT EXCHANGER**

## Controls and Accessories



### Flues

Viessmann offers a wide range of flueing options to cover most domestic applications. This includes various chimney flue systems, multiple communal flue applications and outside wall solutions designed to overcome boiler relocation issues of flue plumbing nuisance.

The minimum and maximum flue lengths for the Vitodens 100-W are:

Horizontal: 0.5m/6m (inc 1 x 87° elbow)

Vertical: 1.18m/10m (inc 2 x 87° elbows and 3 x 45° elbows)

The flue diameter for the Vitodens 100-W is 60mm inner/100mm outer.

The following flue kits and components are available:

Telescopic flue kit (450mm – 640mm)

Standard flue kit

Standard horizontal flue kit, with 650 terminal, 87° bend and 1.5m extension

SC Vertical flue kit

45° and 87° Flue bends

0.5m, 1m and 1.95m Flue extensions

Flue fixing bracket

### Fixing kits and Pipe covers

The Vitodens 100-W is supplied with a wall bracket and fixings. Optional extras include a stand-off frame with pipe tails and pipe cover or a pre-plumbing jig with fittings and pipe cover. The pipe cover can be ordered as an individual accessory.

### Plume kits

Plume kits and accessories are available as follows:

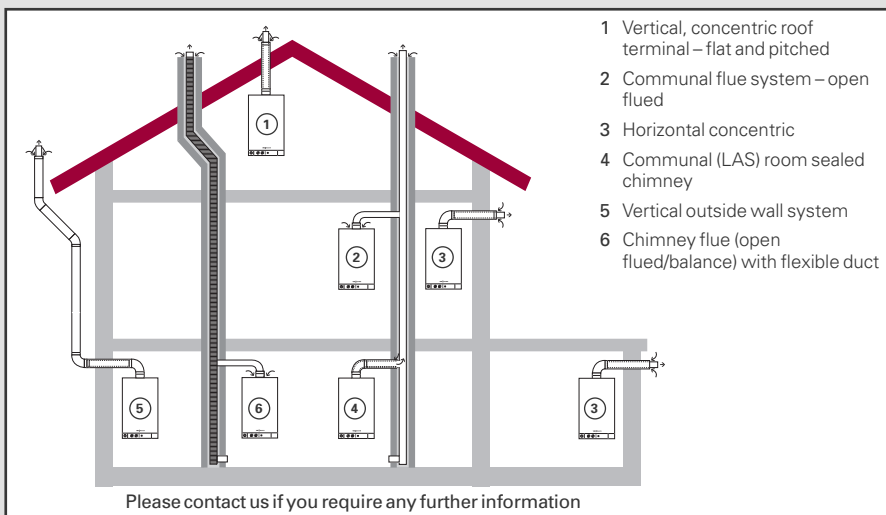
Plume management kit

45° Bends

87° Bends

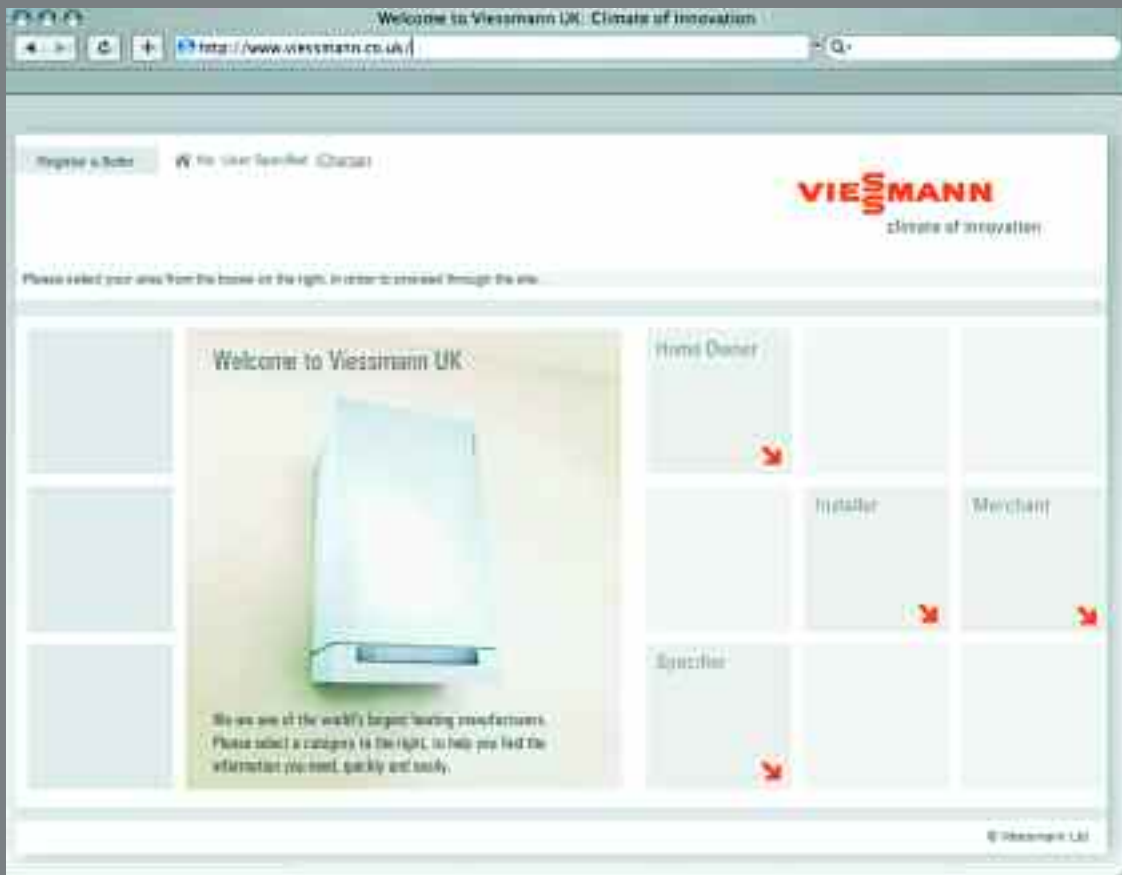
1m Plume kit extension

Plume kit fixing clamps



Please visit our UK website for detailed product range information and brochure downloads.

[www.viessmann.co.uk](http://www.viessmann.co.uk)



Hortonwood 30  
Telford  
Shropshire  
TF1 7YP  
United Kingdom  
+44 (0) 1952 675000 – Switchboard  
+44 (0) 1952 675040 – Fax  
+44 (0) 1952 675010 – Domestic sales  
+44 (0) 1952 675090 – Commercial Sales  
+44 (0) 1952 675060 – Customer Service - Commissioning/Breakdowns  
+44 (0) 1952 675070 – Installer Technical Advice  
[www.viessmann.co.uk](http://www.viessmann.co.uk)